

CAMPBELL



PATERSON

# NEWSLETTER

FOR COLLECTORS OF NEW ZEALAND STAMPS

VOLUME 71 NUMBER 9 APRIL 2020

**United  
against  
COVID-19**

**CP'S NEW ZEALAND STAMPS - WELCOME TO OUR TRADITION**

CAMPBELL PATERSON PO Box 99988, Newmarket, Auckland 1149, New Zealand

1 Ngaire Avenue, Newmarket, Auckland 1051, New Zealand

T. 64-9-522 0311, F. 64-9-522 0313

E. [service@campbellpaterson.co.nz](mailto:service@campbellpaterson.co.nz) W. [www.campbellpaterson.co.nz](http://www.campbellpaterson.co.nz)



New Zealand  
Stamp Dealers  
Association Inc.  
[www.nzsdai.com](http://www.nzsdai.com)



## Editorial

### Nigel Shanks

What a time we are living in. As I write this, New Zealand is in day two of a lockdown which is scheduled to last at least the next four weeks with all non-essential movements banned. Prior to the lock down, I moved from St Marys Bay in Auckland to my small 30 acre farm in Paparoa in the Kaipara district in Northland. David has relocated his computer and a fair amount of stock to his home in Auckland and between us these are the locations Campbell Paterson will be run from for at least the next four weeks.



We are pleased to still be able to provide you our April newsletter (and on time too), albeit a much reduced format with no scans available for download online. Our design company are still working – each of them remotely from home like us – and as such there is no way for us to get original items to them for scanning.

We originally planned to have The April newsletter as only available for download from our web site as our print company was closed due to being a non essential service. However, we decided to print and send this out with our May Newsletter – this will be good news to the many clients who collect an uninterrupted set of newsletters and of course there is the opportunity to order any items still available in the newsletter.

## Editorial (cont.)

Auckland hosted NZ2020 FIAP International Stamp Exhibition in late March. This was due to run from Thursday March 19 until Sunday March 22. As the pandemic progressed it became clear that the show would take a very different form to what was originally planned. International dealers, for the most part, were not able to make it into New Zealand as was the case for commissioners and of course exhibitors and guests who planned to attend from overseas.

The organisers followed government instruction which changed daily as the crisis worsened. First gatherings of more than 500 people were banned, then the number was reduced to 100 and a registration desk was set up so more than 100 people were in the room at any one time. At 12.40pm on Saturday March 21 the Prime Minister introduced a four alert system and advised that New Zealand was on Level 2 – a level where anyone over the age of 70 was strongly advised not to be a part of any gathering. With that the show ended and was officially closed by the organisers at 1pm Saturday March 22.

Campbell Paterson had a stand at the show (shared with Auckland City Stamps) and was manned by 'the two Davids' – Holmes and Farr. The first two days saw brisk trade and the feedback we have had from clients attending was very positive, especially around how professionally the organisers were handling the directives to keep everyone safe.

So, where to from here for philately? Of course this is all new territory but it seems that the world will be very much changed as a result of this pandemic. It looks like the lock down in New Zealand will likely continue for some time beyond the initial four weeks and even when it does end there are likely to be quite a few changes to how we live our lives, work, travel and also how we look at tourism. Our initial thoughts are that there will be somewhat of a resurgence of interest from existing collectors who suddenly find themselves with more time to spend on their hobby. Of course these same collectors may also at the same time find themselves with less discretionary income to spend on the hobby so we would certainly not be predicting a spike or boom in philately. Our advice at this very early stage is to stay safe and if you have the time, perhaps dedicate some of it to doing that research you've always been meaning to do but have never had the time.

You may also decide that now is the time to sell some or all of your collection or even start collecting another area of interest. David is of course here to assist and is only an email away or maybe even try his mobile +64 274 764 078.

Over the following pages you will find 250 items for direct sale. We're able to offer a 10% discount if you purchase three or more items. Please email David if you'd like scans or would like to order any of the items on the list.

So all that is left now is for us to wish each of you all around the world the very best as we navigate though Covid-19. Please stay safe and take care.



5302



5303



5304



5307



5318



5326



5469



5496



5500



5497



5334



5403



Ex 5394



5338



5416



Ex 5526



5514



Ex 5465



5451



5413



5391



5505



Ex 5525



5472



5478



5418

## NEW ZEALAND STAMPS

### 1855-62 IMPERF FULL FACE QUEENS

- |      |   |  |      |
|------|---|--|------|
| 5300 | C | 1d Bright Orange-Vermilion CP A1e(1) SG 33, 3d Brown Lilac CP A3a(1) SG 40 and 6d Red Brown CP A5b(5) SG 43 on a Tri-Colour Full Face Queen Cover all cancelled by Obliterator '1' (Auckland) cancels to England. Endorsed 'Via Marseilles' with initials at bottom left. Backstamped Auckland & Hull cancels. The cover has a light vertical crease, away from the stamps. Fine & Rare Item (1) | 4000 |
| 5301 | U | A1d 1d Dull Orange No Watermark SG 8 Used cancelled with part 'P(aid At) Christchurch' Crown Circle handstamp. The stamp has 4 close or touching margins. Also has a minor surface fault and has a thin on the back. (1)   | 200  |
| 5302 | U | A2d(12) SG 38 2d Blue Large Star Watermark cancelled with fine 'NSW' triple circle overseas shipmail cancel. The stamp has 4 close to good margins. Nice Item (1)  | 200  |
| 5303 | U | A2d(8) SG 37a 2d Pale Blue Large Star Watermark cancelled by Manuscript 'TURANGA' cancel plus a light obliterator cancel. The stamp has 3 Margins with a slight scissor cut at top left. (Turanga PO was the early name for Gisborne PO) Complete cancel (1)   | 250  |
| 5304 | U | A2j(2) SG 98 2d Blue NZ Watermark cancelled with part 'HEADQUARTERS' (Maori War Period cancel) light in parts. The stamp has 4 close to good margins. CP Cat \$750 (1)   | 200  |
| 5305 | U | A3d(T) SG 118a 3d Mauve Imperf single Fine Used with 4 Close to Good Margins, close or touching on the right margin. CP Cat \$1250 (1)   | 250  |
| 5306 | U | A5b(2) SG 41 6d Grey-Black Large Star Watermark cancelled with 'Lucas Creek 1862' Manuscript cancel with a light obliterator cancel. The stamp has 4 Close even Margins. Fine Item. (Original name for Albany PO) (1)  | 450  |
| 5307 | U | A5b(3) SG 42 6d Brown Large Star Watermark cancelled with 'GWAVAS' Manuscript cancel plus a light obliterator cancel. Has 4 Close Margins. Fine & Scarce cancel (1)  | 400  |
| 5308 | U | A5b(5) SG 43 6d Red Brown Large Star Watermark cancelled with part "MA-HURANGI Jan 2 64' early type cancel. Light in parts. (The original PO name for Warkworth) (1)   | 150  |

### 1862-73 PERF FULL FACE QUEENS

- |      |   |  |     |
|------|---|--|-----|
| 5309 | U | A1m(3) SG 111 1d Orange-Vermilion cancelled with 'TE MUKA' Star cancel. Good strike on the cancel (1)  | 150 |
| 5310 | C | A1m(3) SG 111 1d Orange-Vermilion tied by Obliterator 'C' (Christchurch) cancel on a Mourning FRONT dated FE 4 1869 with a part Christchurch cancel at left addressed to Mr T Kent, Oxford Terrace. The 1d value used as a Town 1d Drop Rate (1) | 200 |
| 5311 | U | A2n SG 114 2d Blue with a nearly complete '4/ONEHUNGA/A' Maori War Period cancel (1)   | 75  |
| 5312 | U | A2n(v) SG 115a 2d Blue cancelled with 'ALF' (Alford Forest) Manuscript cancel with a part Obliterator 'C' cancel. Scarce (1)   | 200 |
| 5313 | U | A2r SG 130 2d Orange P10x12 1/2 Used with a good 'A over 3' (Thames) cancel (1)  | 50  |
| 5314 | U | A2s(4) SG 134 2d Vermilion cancelled with smudged & overinked 'ALF' (Alford Forest) cancel which appears backwards on the stamp. Scarce early type cancel (1)  | 150 |
| 5315 | U | A5h(2) SG 122 6d Red Brown cancelled with 'AB' (Anderson's Bay) Manuscript cancel plus a light obliterator cancel. Scarce (1)  | 150 |
| 5316 | C | A5k(3) 6d Pale Blue SG 135 tied by Obliterator 'O' cancel on Cover to Scotland. Endorsed 'Via Suez'. Backstamped Dunedin (5 line cancel) OC 27 1873 & Bridge of Barn DE 31 1873 cancels. The cover has light ageing and two tears. (1)           | 150 |

## APRIL OFFERS (cont.)

### 1874 FIRST SIDEFACES

5317	C	C2a 2d Rose tied on Cover with Ashburton Obliterator cancel (light strike) with 5 line Ashburton JU 3 74 cancel at left addressed to Christchurch. Backstamped Christchurch. Scarce Ashburton Cover (1)	250
5318	*/U	C2f 2d Rose P12x11 1/2 with a fine strike 'GB/1f62 1/20' French Accountancy cancel for Opunaki PO. Very Scarce (1)	250
5319	C	C2f 2d Rose tied by Wellington 31 JY 78 duplex cancel addressed to Otaki on creased cover. Backstamped with 'W11 AU 1 1878' Letter Number datestamp. Scarce letter marking and proving cover (1)	250
5320	U	C8a 5/- Grey with fiscal cancel. Scarce (1)	150

### 1882 SECOND SIDEFACES

5321	C	1/- Chesnut plus 2d Lilac & 1d Rose values tied on Registered Cover by New Plymouth duplex cancels to England. Has boxed 'Registered/At/New Plymouth/No' violet handstamp. Also red '128' in manuscript. Red 'Registered/London 18 AUG 90' handstamp. Backstamped Chadwell. The cover has ageing on edges and with slight faults. No flap at back. Nice franking (1)	450
5322	U	2d Lilac 4x different Plate 2 flaws - R2/4,6/4,9/2,10/2 stamps used on small part album page with aricators identifying the flaws (4)	40
5323	U	D2a (SG 187) 1d Rose P12x11 1/2 Die 1 Strip of 6 on piece postmarked with 'DIPTON DE 28 82' 6 cancels. The piece has first year cancels (6)	50
5324	C	D2j 1d Rose P10 Pair tied on Union Bank Cover by Springfield 27 SP 95 cancels. Has fine advertising back with 6 different advertisements. The cover has a light horizontal crease. (1)	150
5325	U	D2m 1d Rose P10x11 Pair Perfined with Perfin 'SSE' in a Mirror Image Pair postmarked 'Dunedin 5 SP 96' Fine Perfined Pair (2)	50
5326	U	D6b(z) 4d Green Used with Mixed Perforations Very Good Used postmarked with part Dunedin 2 MR 9? cancel. CP Cat \$750 (1)	450
5327	C	D8h 6d Brown P10 added to KEVII 3d Registered Cover cancelled with 'DUNEDIN R' cancels to London. Has Red 'Registered/London 25 NO 05' cancel. Nice franking (1)	125

### 1893 ADVERTISEMENT STAMPS

5328	U	CP DA3c(2) 2d Lilac 2nd Setting in Brown with Truebridge, Miller & Reich with advert doubled (1)	200
------	---	--	-----

### 1898 PICTORIALS

5329	P	1/2d Purple Brown Plate Proof Imperf Block of 4 on unwatermarked paper (4)	100
5330	U	E17c 9d Terraces P11 tied by part 'Te Aroha 15 NO 06' coin cancel on small parcel piece (1)	25
5331	*	E18d 1/- Kea & Kaka P11 Watermark Mint with a distinctive printing flaw on the right (1)	200
5332	U	E21a 5/- Mt Cook London Print cancelled with 'CUNNINGHAMS 5 SP 02' forged cancel. CP Cat \$1500 (1)	250
5333	**	E21a 5/- Mt Cook London Print Fine Unhinged CP Cat \$2500 (1)	1750
5334	U	E21b 5/- Mt Cook P11 No Watermark cancelled with 'Wellington 19 FE 27' cancel. Late usage. CP Cat \$1000 (1)	500
5335	C	E8d 2 1/2d Wakatipu P14 tied on Roessler Cover by 'FANNING ISLAND MR14 13' cancel. Backstamped New York receiving cancel. Minor stain on the stamp (1)	150

### 1900 PICTORIALS

5336	U	1/2d Green Mt Cook Strip of 5 tied on piece by 'LEVUKA/FIJI 17 JUN 03' cancels. Nice Shipmail cancels (5)	50
5337	P	1d Terraces Imperf Plate Proof Top Marginal Block of 30 in Crimson. Fine Item (30)	500
5338	U	E4a(z) 1 1/2d Boer War Used with Horizontal Doule Perforations. Scarce CP Cat \$250 (1)	200

## APRIL OFFERS (cont.)

### 1901 1D UNIVERSAL

5339	C	G1a London Print on Plain First Day Cover Posted at Masterton. ACS Cat \$300 (1)	150
5340	*	G3a (SG 385) Basted Mills P11 Good Mint CP Cat \$450 (1)	300
5341	*	G4c (SG 297) Cowan No Watermark P14x11 Good Mint CP Cat \$225 (1)	150
5342	U	G4d (SG 299) Cowan No Watermark Mixed Perfs Fine Used. CP Cat \$450 (1)	300
5343	U	GO11a Official Unlisted INVERTED WATERMARK Fine Used. Only recently discovered! (1)	1250
5344	U	Perfin - 1d Universal with 'FBLD' (Friendlander Bros Ltd) dated 1901 (1)	10
5345	C	Registered Cover to Tasmania with 4x 1d Universals tied by Port Awanui (Gisborne PO Open 1878-1936) 10 SP 04 cancels. Backstamped Gisborne, Wellington & Registered Hobart cancels. Usual spike hole (1)	100

### 1906 CHRISTCHURCH EXHIBITION

5346	C	Private Lettercard Fine Pictorial Printed Card with Portraits of Lord Plunket, Sir Joesph Ward and Mr Munro Mint (1)	75
------	---	--	----

### 1907 PICTORIALS

5347	C	E10c 3d Huias P14x15 tied on Registered Leaf Mail Posted at Oamaru 30 JL 09 to Christchurch. Interesting item (1)	200
5348	C	Express Delivery Cover with 3d Huias x 2 plus 1d Universal tied by Rakaia 22 JE 08 cancels to Christchurch. The cover endorsed 'Express Delivery' in red manuscript. Backstamped Christchurch. Has slight edge staining. Interesting Pictorial Cover and non usage of Express Delivery stamps. (1)	500

### 1909 1D DOMINION

5349	C	1914 (4MR) Cover with 1d Dominion tied by 'CITIZENS FETE/DUNEDIN' cancel. Scarce cancel on cover (1)	300
5350	C	1925 (10DE) Cover from Whakarongo Public School with 1d Dominion tied by 'WHAKARONGO' cancel to Penang, Straits Settlement. Backstamped Penang & Singapore. (1)	75
5351	P	Imperf Black Plate Proof from top margin unhinged. Fine Block (4)	100
5352	**	J1a(r) De La Rue Imperf at sides and bottom with selvage single unhinged. CP Cat \$1750 (1)	1250
5353	*	J1a(t) (SG 405a) De La Rue Imperf Pair Nice Mint CP Cat \$1000 (2)	400
5354	*/**	J6a (SG 410) Cowan Paper in a Block of 12 with PO Patching through the centre of the block. Very light gum ageing. Scarce (12)	300

### 1909 KING EDWARD VII

5355	U	H1a (SG 387) 1/2d Green Pair tied on piece by 'Exhibition Opens Auckland No 18 1913' machine cancel plus fine violet 'SPECIAL CONSTABLES' CAMP/QUEENS WHARF/AUCKLAND' Maritime Strike handstamp. (2)	100
5356	C	H2a (SG 388) 2d Mauve added to KEVII 1/2d Printed Cover cancelled at Auckland 28 AU 10 to Germany. No backstamp (1)	150
5357	U	H6a (SG 398) 6d Carmine P14 Line Block of 6 postmarked WINTON 16 DE 15 Very Good to Fine Used. Minor corner creasing on 1 stamp otherwise a nice multiple. CP Cat \$240 alone for the stamps (6)	150

### 1913 AUCKLAND EXHIBITION

5358	U	Forgeries Set 1/2d to 6d on pieces with forged overprints and cancels (4)	100
5359	U	S5a/S8a (SG 412/15) Complete Set 1/2d to 6d Fine Used with Exhibition Cancels. CP Cat \$1600 (4)	750

### 1915 KGV RECESS

5360	C	1921 (9DE) Registered Cover to England with 1 1/2d Victory & Recess 4 1/2d Deep Green Posted at Westport. Backstamped Registered/London. The cover has slight ageing. Scarce franking (1)	350
5361	U	K4d (SG 433) 3d Chocolate Pictorial Paper Strip of 3 Fine Used. CP Cat \$225 (3)	100

## APRIL OFFERS (cont.)

5362	U	K5f (SG 422f) 4d Bright Violet Two Perf Pair in a Block of 4 Fine Used. Nice Multiple. CP Cat \$1000 (4)	500
5363	U	K5g(1) 4d Deep Bright Violet P14x14 1/2 Very Good Used CP Cat \$220 (1)	100
		<b>1915 KGV RECESS OFFICIALS</b>	
5364	U	K08a(z) 6d Carmine Unlisted Inverted Watermark Fine Used. Recently discovered variety (1)	400
		<b>1915 KGV SURFACE</b>	
5365	P	1 1/2d London Plate Imperf Plate Proof Block of 6 from the bottom margin on watermarked paper with gum. Nice Proof Block (6)	150
5366	P	1/2d Green Imperf Plate proof Block of 4 from bottom margin on thick paper unwatermarked (4)	50
5367	P	1/2d Imperf Black Plate Proof Block of 4 on thin brown unwatermarked paper with gum. Fine Block (4)	100
5368	P	2d Black Imperf Plate Proof Block of 4 on thick unwatermarked white paper (4)	100
5369	**	K18d(z) 2d Yellow Cowan P14x15 with 'YELLOW' Offset on back unhinged with a faint gum tone CP Cat \$300 (1)	150
		<b>1915 KGV SURFACE OFFICIALS</b>	
5370	*	K013a(y) 1/2d Green De La Rue with the 'OFFICIAL' overprint offset on the back variety Mint CP Cat \$425 (1)	200
5371	*	K013e 1/2d Green Cowan P14x15 Top Sheet Number Block of 8 (T746363) with PO repatching through the centre of the block. Fine Item (8)	150
		<b>1925 DUNEDIN EXHIBITION</b>	
5372	C	Private Letter Card Printed for the Exhibition with Portraits of Sir Chas Fergusson, JG Coates, Sir James Allen & CP Hainsworth with unused 1d value (1)	75
5373	U	S17a/17c Complete Set 1/2 to 4d tied on piece by First Day Dunedin Exhibition machine cancel (3)	150
		<b>1931-4 AIRMAILS</b>	
5374	C	1931 (JA15) Dominion Airways Ltd Hastings to Gisborne Flight Cover with Airmail label tied and initialled. Signed by GB Bolt (1)	150
5375	C	1932 (15JL) NZ-Africa First Official Flight Cover to Addia-Abeba, ETHIOPIA with 3d & 7d Airmails plus KGV Surface 1/2d & 2d values Posted at Wellington. Scarce (1)	200
5376	C	1932 (26JE) NZ-Africa First Official Flight Cover to Beira, Portugese East Africa with 4d & 7d Airmail values plus 1d Field Marshal Posted at Gisborne. The cover has unclaimed markings. Scarce (1)	150
5377	C	1932 (27JE) NZ-Africa First Official Flight Cover Registered to Salisbury, Southern Rhodesia with 3d,4d & 7d Airmails plus 1d Field Marshal Posted at Palmerston North. Scarce (1)	150
5378	C	1932 (28JE) NZ-Africa First Official Flight Cover to Khartoum, SUDAN with 4d Airmail & 1d Field Marshal values. Scarce (1)	150
5379	C	1932 (28JE) NZ-Africa First Official Flight Cover via Karachi to South Africa. Has 7d & 5d on 3d Airmails plus 1d Map Pair Posted at Timaru. Scarce (1)	150
5380	C	1932 (29JE) NZ-Africa First Official Airmail Flight to Nairobi, KENYA with 4d & 7d Airmails tied by Auckland FMB cancels. Scarce (1)	150
5381	C	1932 (29JE) NZ-Africa First Official Flight Cover to Assonan, EGYPT with 5d on 3d Airmail tied by Auckland FMB cancel. Scarce (1)	200
5382	C	1932 (29JE) NZ-Africa First Official Flight Cover to Dodoma, Tanganyika Territory with 4d & 7d Airmails tied by Auckland FMB cancels. Scarce (1)	150
5383	**	V5a(y)/V5a 1934 7d Blue Trans-Tasman Vertical Selvedge Pair with the top stamp has the Broken 'N' variety both unhinged. CP Cat \$360 (2)	150
5384	**	V6c(z) (SG 572w) 1935 6d Blue Airmail with Watermark Inverted Fine Unhinged with top selvedge. Very Scarce. CP Cat \$600 (1)	500



## APRIL OFFERS (cont.)

### 1935 PICTORIAL OFFICIALS

5385 \* L013d(x) 2/- Captain Cook with R8/2 'COCOANUTS' flaw Good Mint CP Cat \$850 400  
(1)

### 1935 PICTORIALS

5386 C 1937 (15OC) Cover with 1d Kiwi tied by a fair strike 'Pitcairn Island/NZ Postal Agency' cds to Australia. Has two hinge remnants at top (1) 150

5387 C 1937 (16NO) CYGNUS Crash Mail Registered Cover to London with only the 1/- Tui remaining (missing a 9d value) Posted at Caversham. Has two line violet 'DAMAGED BY SEA/WATER' cachet. No backstamp (1) 200

5388 C 1937 (NO) CYGNUS Air Crash Cover to London with only the 9d Grey & Red remaining (missing the 1/- value). Has 2x black boxed 'DAMAGED BY SEA/WATER' handstamps. The cover has been redirected back to NZ. On the reverse has GB PO Official Sealed P48B label. Has a tear at top (1) 150

5389 C 1942 (JL) Censored Cover endorsed 'Prisoner of War Post' with 2/- Captain Cook P12 1/2 Posted at TE ARO to Camp 66 and redirected to Camp 52 in ITALY. Has white censor tape at left with 'Passed By Censor/28' violet cachet. (1) 150

5390 C L10e (SG 586d) Commercial Airmail Cover to USA with 6x 8d Tuatara P14x14 1/2 values all tied by 'AUCKLAND FMB 14 OC 45' cancels. Backstamped New York receiving cancel. Nice 4/- Rate Cover. (1) 95

5391 U L4f(z) (SG 580aw) 2d Whare P14x13 1/2 Watermark Inverted Very Good Used. Very Scarce CP Cat \$1000 (1) 500

### 1937 CORONATION

5392 C 1937 (24OC) Cover with '37 Coronation Set all tied by 'Pitcairn Island/NZ Postal Agency' cancels to NZ. Backstamped Winchester receiving cds. Minor staining Scarce (1) 200

### 1938 KGVI

5393 \*\* 2d Orange in a Corner Plate 142 Block of 4 with a unlisted 'teardrop' flaw on the King's head on the bottom right stamp. The block is hinged on the top 2 stamps (4) 50

5394 P Imperf Plate Proof Pairs - 1d Green (has a light crease), 2d Orange & 4d Purple unhinged (3 Pairs) 250

5395 \*\* M2c(z) (SG 606w) 1d Green Watermark Inverted Unhinged CP Cat \$200 (1) 150

### 1938 KGVI OFFICIALS

5396 C 1940's OHMS Mail Tag addressed to 'Air Department, Private Bag, Wellington C1' with KGVI Officials 8d,4d,9d plus 5/- Arms values all tied by Auckland cancels (4) 200

### 1940 CENTENNIAL

5397 C 1940 (14AP) Picture Postcard (NZS Co's Motor Vessel Rangitane) with 1d Captain Cook tied by 'AUCKLAND/PACKET BOAT' cds fine strike. The postcard has slight ageing (1) 50

5398 C 1940 (14OC) Printed Mutineers on the Bounty Cover endorsed 'Last Day of Using NZ Stamps on Pitcairn island' with 2d Centennial tied by 'Pitcairn Island/NZ Postal Agency' cancel. Also with a extra cancel at left. Has 150 Years Anniversary cachet at top left. On the reverse has 'Fred M Christian/Chief Magistrate' signature. Fine Cover (1) 200

5399 C 1940 (7FE) Centennial of the Signing of the Treaty of Waitangi Printed Cover with 2 1/2d Treaty stamp tied by 'WAITANGI AK 7 FE 40' Relief cancel. Rare Relief date for 7 FE 40. Not often seen (1) 250

5400 \*\* OFFICIALS Joined FF's in Vertical Pairs (1/2d,1d,2d,3d,4d,6d,8d) plus Horizontal Pair (2 1/2d) Set SG 0141a/0149a Unhinged CP Cat \$840 (8 Pairs) 500

## APRIL OFFERS (cont.)

<b>1946 PEACE</b>			
5401	*/**	S44a 4d Airforce in a Bottom Right Corner Block of 4 with partial 'double perforations' on the bottom 2 stamps. One stamp hinged at top with a short corner on the top right stamp (4)	50
<b>1953-9 QUEEN ELIZABETH</b>			
5402	C	N35a (SG 749) 4d Blue Large Figures on Printed First Day Cover. Typed address. CP Cat \$250 (1)	150
5403	**	Official N021a 1d Orange a bottom selvedge single with a Striking 'Confetti Flaw' to the left of the queens head fine unhinged (1)	250
<b>1960-6 PICTORIALS</b>			
5404	C	021a (SG 802) £1 Geyser on Last Day Cover 9 JL 67 before Decimal Currency Posted at Gisborne (1)	50
5405	*/**	5d Daisy CP 07a(y) Left-hand Selvedge Block of 6 with Striking 'Double Perforations' variety horizontally on the first two of the block. Also an extra row of perforations vertically in the selvedge. One stamp hinged, the rest unhinged. Fine Perforation Error Block (6)	500
<b>1970 DEFINITIVES</b>			
5406	**	10c Royal (No Watermark) Top Value Corner Vertical Pair with the 'Silver Arms' Shifted downwards to the top of the perforations unhinged (2)	150
5407	*	10c Royal stuck on piece unused but with Striking 'Silver' Printing flaw on the Queen's Head and the word 'New Zealand' Interesting variety (1)	100
5408	**	4c Puriri Moth (No Watermark) Top Selvedge Vertical Block of 8 with a Striking Pre Printing Crease resulting in Major Colour Shifts of the Yellow, Green & Blue. Fine Unhinged (8)	1000
5409	U	4c/21/2d Moth London Letterpress CP P30b with the Surcharge raised to the top Fine Used. Nice variety (1)	125
5410	**	8c John Dory (No Watermark) CP P11b(z) Ochre Colour Omitted in a Top Selvedge Strip of 3 with the first two stamps affected fine unhinged. CP Cat \$3200 (3)	2000
<b>1972-5 COMMEMORATIVES</b>			
5411	**	1974 4c Aeroplane CP S191a Vertical Pair with the Design Error moved to the right unhinged (2)	100
<b>1975-9 PICTORIALS</b>			
5412	**	1977 10c Queen CP PA10a Right hand Selvedge Strip of 5 with a Horizontal Double-lined 'Doctor Blade' flaw through the middle of each stamp. Striking Variety unhinged (5)	100
5413	**	1979 4c/8c Rose CP PA30a(v) with Red, Green & Black Offset Colours Unhinged CP Cat \$1250 (1)	1000
<b>1980-89</b>			
5414	**	1982 24c Map CP PA35b Plate 117 Fine Unhinged CP Cat \$800 (6)	600
<b>ANTARCTICA</b>			
5415	*	1911/12 1/2d & 1d Victoria Land CP RD2a/3a (SG A2/3) Good Mint both with RPS London Certificates CP Cat \$1975 (2)	1250
5416	U	1913 1/2d Victoria Land CP RD3a/SG A2 Fine Used tied on piece 'Brit Antarctic Expd 18 JA 13' First Day cancel. CP Cat \$2250 (1)	1500
<b>CINDERELLAS</b>			
5417	U	1890 1d Red Express Freighter Heslop K2 Used with blue crayon line (1)	75
5418	*	1906 Carlyle Booth MacDonald Kiwi label Mint No Gum Scarce. Cat \$500 (1)	300
5419	U	1906 Christchurch Exhibition No 3 Kiwi label Used with Travelling PO cancel (1)	20
5420	U	1906 Christchurch Exhibition No 5 Tui label Used (1)	20
5421	*	1906 Kaiapoi Woollen Goods Kiwi label Mint No Gum (1)	50
5422	*	1911 1d Blue National Prohibition label Mint No Gum (1)	200

## APRIL OFFERS (cont.)

5423	*	1914/18 1d Auckland Electric Tramways Co Ltd 1d War Relief Fund Red/Blue Imperf label (1)	150
5424	*	1914/18 Delandre 'Glory of the Anzac!' label Heslop OS12 Mint (1)	250
5425	*	1915 1/- Botha Patriotic label Mint No Gum Cat \$250 (1)	150
5426	U	1915 1/2d Poverty Bay Wounded Soldiers War Seal label Fine Used (1)	50
5427	**	1930's Mount Maunganui Bay of Plenty/Happy Holidays Summer & Winter Oval label Unhinged (1)	50
5428	*	1932 Home Gifts Certificate/Kapai Pink/Black for Maoriland Importers Ltd (1)	100
5429	**	1935 Come and See Me Soon South Island Tourism label with Map Green/Blue Mint (1)	25
5430	**	1940 NZ Centennial Games Auckland Red/Green Imperf label. Heslop F11 unhinged (1)	50
5431	**	1940 WW2 Sick, Wounded & Distress Fund - Military Hospital 2nd NZEF Unhinged (1)	100
5432	*	1940 WW2 Sick, Wounded & Distress Fund - The Red Cross label Heslop J64 Mint (1)	100
5433	*	1940's WW2 6d National Savings Stamp Heslop R165 in a Block of 4 Mint (4)	100
5434	*	1940's/1962 Hay's Cash Discount Stamps 7x Different with 2x Fern & 5x Value 1 labels Mint (7)	100
5435	**	1945 Prevent Forest Fires/Keep NZ Green Heslop M9 Roulette label Unhinged (1)	50
5436	**	1949 Air Mail Society 50th Anniversary Great Barrier Island Pigeongram Agency Stamps Red/Blue Imperf Min Sheet unh (1)	25
5437	**	1951 Otago/Southland Industries Fair Heslop B92 unhinged (1)	20
5438	*	1956 Hastings Blossom Festival Heslop B114 roulette label Mint (1)	50
5439	**	1956 Hastings Highland Games Easter rouletted label unh (1)	50
5440	**	1956 Southland Centennial Heslop F38 rouletted label unh (1)	25
5441	**	1958 Green Cross For Safety Green/Red Imperf label Heslop G87 unhinged (1)	20
5442	**	1958 Hastings Blossom Festival Heslop B122 roulette label unhinged (1)	50
5443	**	1958 Hawke's Bay Centennial Heslop F42 roulette label unhinged (1)	25
5444	**	1959 PSSA Christmas Greetings Three Wiseman Set of 3 labels Heslop H24 unhinged (3)	100
5445	**	1960 United Nations Day Heslop G94 roulette label unhinged (1)	20
5446	*	1960's Join The Modern Army/Help Defend New Zealand Heslop J106 roulette label Mint (1)	20
5447	*	1960's Volunteer Service Abroad Heslop G96 roulette label Mint (1)	20
5448	**	1965 Haast Pass Opening Green/red Imperf label Heslop D58 unhinged (1)	75
5449	*	1968 Timaru Bicycle Local Post Set 1c to 15c Mint (6)	100
5450	**	1977 NZ-Antarctica First Commercial Flight Antarctic Tourist Flight Imperf Yellow/Blue Unhinged (1)	30

### CUSTOM ADVERTISING LABELS (CALs)

5451	U	2004 40c Arts Festival CAL Fine Used on piece. Cat \$3500 (1)	1250
<b>EXPRESS DELIVERY</b>			
5452	U	1903 6d Fernleaves CP U1a/SG E1 on part piece with 2d 1900 Pictorial both tied with 'Hobart/Tasmania 1908' cancels. (2)	100
5453	**	1903 6d Fernleaves CP U1a/SG E1 Unhinged Cat \$200 (1)	150
5454	U	1903/1939 6d Fernleaves CP U1a/U1e (SG E1/5) The 5 different printings Fine Used CP Cat \$810 (5)	500
5455	**	1926 6d Fernleaves Cowan P14x14 1/2 CP U1b(2)/SG E2 Unhinged CP Cat \$200 (1)	100
5456	C	1933 (3SP) Cover with 6d Fernleaves plus 1d Field Marshal tied by Christchurch Registered cds to Timaru. Has 2x Vertical Blue Lines plus Red Express label. Nice Item (1)	250
5457	C	1937 (23NO) Cover with 6d Fernleaves plus 1d 1935 Kiwi tied by Palmerston North Delivery cds to Napier. Has Red Express label at top left (1)	200

## APRIL OFFERS (cont.)

5458	C	1939 (16AU) First Day Cover 6d Express Car stamp plus 1d KGVI Red tied by Auckland cds. Has 2x Vertical Blue Lines plus Red Express label. CP Cat \$750 (1)	300
5459	C	1939 (17NO) Cover with 6d Express Car plus 2d 1935 Pictorial values tied by Auckland Registered cancels to Wellington. Has 2 Vertical Blue Lines plus Red Express label. Minor ageing (1)	200
5460	*	1939 6d Car CP U2a/SG E6 Bottom Left Corner Block of 4 with PO Repatching on the bottom left stamp. Fine Block (4)	100
5461	**	1939 6d Fernleaves Wiggins Teape P14x15 CP U1e/SG E5 Unhinged CP Cat \$300 (1)	200
5462	C	1942 (11MY) Censored Registered Cover to Ireland with 6d Express Car plus KGVI 1d Green tied by Auckland East cds. Various backstamps. Light ageing. Scarce & Unusual (1)	300
5463	C	1946 (20JL) WW2 Victory Patriotic Printed Cover to USA with 5d Swordfish & 6d Express Car values tied by PAREORA cds (1)	100
<b>HEALTH</b>			
5464	C	1930 Nurse First Day Cover Posted at Tokatoka. The cover has some light staining. CP Cat \$850 (1)	400
5465	U	1931 Red & Blue Boys both cancelled with 'Christchurch 31 OC 31' First Day cancels. Nice Items (2)	500
5466	C	1938 Illustrated First Day Cover Jones H38.1EA (2) Scarce (1)	150
5467	C	1945 First Day Cover tied by Anderson Park Air Force 1 OC 45 cancel Scarce cancel (1)	100
5468	C	1946 Illustrated First Day Cover Jones H46.10 Barrett Cover. Very Scarce (1)	250
5469	**	1950 1d Royalty CP T22a with Green Offset variety Fine Unhinged (1)	500
5470	**	1965 4d Fantail Min Sheet CP TM37b(x) with Black Offset Variety Fine Unhinged CP Cat \$3000 (1)	2500
5471	**	1984 24c Horses Pair CP T56a/b (v) Orange Colour Omitted Unhinged in a Block of 4 Unhinged CP Cat \$1800 (4)	1500
<b>LIFE INSURANCE</b>			
5472	*	1891 1/- Rose CP X6a/SG L6 Good Mint Centred left. Fine Colour CP Cat \$2000 (1)	1000
5473	U	1891 1/- Rose VR CP X6a/SG L6 Good Used with a slight overinked cancel. CP Cat \$500 (1)	250
5474	*	1891 1/- Rose VR CP X6a/SG L6 Mint No Gum. Fine Colour (1)	250
5475	U	1891 6d Green VR CP X5a/SG L5 Fine Used CP Cat \$275 (1)	150
5476	*	1891 6d Green VR CP X5a/SG5 Good Mint Nice Colour CP Cat \$1250 (1)	600
5477	U	1905 2d Chestnut No VR CP X10a/SG L21 Fine Used CP Cat \$425 (1)	250
5478	*	1905 2d Chestnut No VR CP X10a/SG L21 Good Mint. Centred to left. Very Scarce CP Cat \$5500 (1)	2500
5479	**	1946 2d Yellow W. Teape CP X10e/SG L39 in a Corner Sheet No Block 12 (No. 00571) Unhinged CP Cat \$420 (12)	200
5480	P	1947 3d Eddystone Imperf Plate Proof Block of 4 Unhinged (4)	200
5481	**	1967 3c on 4d Stephens Island CP X24a(y) Double Surcharge variety Unhinged. Unprice in CP (1)	750
5482	**	1969 4c Cape Egmont CP X30b Plate 11 Block of 4 Unhinged Scarce CP Cat \$500 (4)	400
5483	**	1969 4c Cape Egmont CP X30b Plate 1a1a Block of 4 Unhinged. Scarce. CP Cat \$500 (4)	400
<b>PERFINS</b>			
5484	U	Great Britain KEVII 2d & 3d plus KGV 1 1/2d & 2d values all Perfined 'BNZ' Used (4)	40



5527



5529



5532



5535



5502



5503



5362



5417



5489



5537



5493



5498



5423



5481



5431



5409



5422



5494



5539



5405

## APRIL OFFERS (cont.)

### POSTAGE DUES

5485	U	1899 1/2d Green/Red CP Y1a(z)/SG D1a R2/3 No Stop after D variety Very Good Used CP Cat \$210 (1)	100
5486	**	1899 1/2d Green/Red Large D CP Y1a/Y1a(z) Top Selvedge Block of 6 with R2/3 No Stop after D variety Unhinged. CP Cat \$1000 (6)	400
5487	U	1899 2/- Green/Red CP Y14a/SG D4 Very Good Used with part Red Parcels cancel. CP Cat \$475 (1)	200
5488	U	1899 8d Green/red CP Y11a/SG D2 Fine Used CP Cat \$375 (1)	250
5489	U	1905 2d Carmine & Green P11 CP Y17a/SG D20 in a Block of 4 Very Good Used to Fine Used. Very Scarce Multiple. (4)	1000
5490	**	1937 Wiggins Teape 1/2d,1d,2d,3d SG D37/40 Unhinged CP Cat \$235 (4)	150

### POSTAL FISCALS

5491	U	1880 QV £5 Blue NZ Watermark Fine Used postmarked with part 'Christchurch ? JA 85' postal type cds (1)	250
5492	*	1882 QV £1 Pink CP Z15a/SG F21 Mint with 'Specimen' handstamp. Has surface blemishes. CP Cat \$1000 as a normal stamp (1)	250
5493	P	1882 QV 10/- Brown Red Imperf Plate Proof single with toning on the back (1)	100
5494	U	1882 QV 1d Lilac CP Z1a/SG F1 Fine Used postmarked Foxton 21 MY 90 CP Cat \$1600 (1)	800
5495	U	1882 QV 6/- Rose NZ Watermark SG F14a Nice Used (1)	200
5496	U	1882 QV 6d Red-Brown CP Z1e Watermark NZ & Star Good Used with part 'RTPO DNS' Obliterator cancel. CP Cat \$750 (1)	400
5497	U	1882 QV 8d Green CP Z1f Fine Used CP Cat \$2000 (1)	1000
5498	U	1886 QV £4 Blue Fine Used postmarked with 'Auckland 19 OC 88' postal type cancel. ACS Cat \$450 (1)	350
5499	U	1895 QV £1 Rose Carmine P11 CP Z15d/SG F68 Very Good Used with part 'REGISTERED 1900' cds CP Cat \$250 (1)	200
5500	*	1895 QV 7/6 Grey P11 CP Z9c/SG F63 Good Mint CP Cat \$2500 (1)	1500
5501	*	1901 QV 2/6 Brown Counterpart CP Z3e Block of 4 with gum toning. CP Cat \$2000 (4)	600
5502	*	1901 QV 2/6 Brown Counterpart CP Z3e(z) Mint with a light gum tone CP Cat \$500 (1)	300
5503	*	1913 QV 8/- Deep Blue DLR P14 1/2 x 14 CP Z10j/SG F118 Good Mint CP Cat \$900 (1)	700
5504	*	1913 QV 9/- Orange DLR P14 1/2 x 14 CP Z11h/SG F119 Good Mint CP Cat \$1000 (1)	750
5505	**	1925 QV 10/- Brown Red Cowan Paper CP Z12m/SG F139 Unhinged CP Cat \$3000 (1)	2400
5506	*	1925 QV 6/- Rose Cowan Paper CP Z7l/SG F136 Good Mint CP Cat \$600 (1)	500
5507	*	1939 Arms 35/- on 35/- Orange-Yellow CP Z57a/SG F186 Good Mint CP Cat \$1000 (1)	500
5508	U	1939 Arms 35/- on 35/- Orange-Yellow CP Z57a/SG F186 Good Used CP Cat \$975 (1)	375
5509	U	Official 1940 Part OHMS Piece with 5/- Arms Horizontal Overprint CP Z033b in a Block of 6 plus 1940 Centennial Officials 2d,9d,1/- all tied by Government Buildings cancels. The piece has creasing at top but not affecting the stamps. Fine Multiple (9)	250

### REVENUES

5510	U	Denoting 1924/37 KGV 3d Brown P14x15 Cowan Paper Kiwi R47a Unpunched (1)	200
5511	U	Denoting QV 12/6 Deep Plum Kiwi R51 tied on 1926 piece (1)	75
5512	U	Fine Paid 1922/33 QV 3/- Mauve DLR Kiwi R70 Unpunched (1)	60
5513	U	Fine Paid 1922/33 QV 5/- Yellow Green Kiwi R72 Perfined (1)	50
5514	U	Fine Paid 1922/33 QV 7/6 Grey Brown Kiwi R74 Unpunched Cat \$400 (1)	300

## APRIL OFFERS (cont.)

5515	U	Fine Paid 1922/33 QV 8/- Deep Blue kiwi R75 Perfinned Cat \$200 (1)	150
5516	U	Fine Paid 1942/53 Arms £1 Pink Kiwi R98a Unpunched (1)	75
5517	U	Fine Paid 1944/51 KGVI 1/3 Red Brown & Blue Kiwi R124 Unpunched (1)	75
5518	U	Fine Paid 1944/51 KGVI 3/- Red Brown & Grey Kiwi R126 Unpunched (1)	125
5519	*	Honey Seal 1938/53 1/2d Light Green Kiwi R128 Mint with a gum toning (1)	20
5520	*	Honey Seal 1938/53 5d Magenta Kiwi R131 Part Gum (1)	30
5521	U	Lands & Deeds 1878 £5 Pale Blue Kiwi R148c Used (1)	100
5522	U	Law Courts 1879 £3 Brown & Blue Kiwi R158b dated 18/3/82 (1)	125
5523	U	Railway Charges 1925 5/- Crimson Kiwi RN23 with Thorndon Typed Station Overprint (1)	50
5524	U	Railway Charges 1925 9d Red Brown with Auckland Station Overprint (1)	50
5525	U	Railway Newspapers 1890 Set 1/2d to 6d incl 3d Brown Kiwi RN1/7 Used (7)	500
5526	U	Railway Parcels 1890 3d Black & 6d Green both P12 1/2 Used (2)	600
5527	U	Stamp Duty 1867 QV £6.10s Orange Red & Green Kiwi R252a Close Margins Cat \$1250 (1)	900
5528	U	Stamp Duty 1867 QV Imperf £7 Orange-Red & Green Kiwi R253a with 3 Margins (1)	200
5529	U	Stamp Duty 1867 QV Imperf £8 Orange-Red & Green Kiwi R255a with 4 Good Margins (1)	300
5530	U	Stamp Duty 1880 QV £1000 Rose Kiwi R506 Unpunched (1)	300
5531	U	Stamp Duty 1880 QV £300 Brown Kiwi R499 Unpunched on piece (1)	100
5532	U	Stamp Duty 1880 QV £400 Rose Kiwi R500 Unpunched (1)	150
5533	U	Stamp Duty 1880 QV £500 Blue Kiwi R501 Unpunched on piece (1)	100
5534	U	Stamp Duty 1880 QV 35/- Yellow Kiwi R466 Unpunched (1)	75
5535	U	Stamp Duty 1931 Arms £1000 Rose & Black Kiwi R549 Unpunched (1)	250
5536	U	Stamp Duty 1931 Arms £400 Rose & Dark Blue Kiwi R548a Unpunched (1)	150
5537	U	Stamp Duty 1935 Arms £3,890 Gold High Value Perfinned on piece. Scarce (1)	500
5538	U	Stamp Duty 1939 Surcharges 3/6 to 35/- Overprints includes both 3/6 values Unpunched (6)	200
5539	U	Stamp Duty QV £12,962 Gold High Value plus QV 7/6,7/- plus 5d KEVII all tied on piece by silver metal foils (4)	400
5540	U	Wage Tax 1936 10d Yellow Kiwi R613 (1)	70
5541	U	Wage Tax 1938 Employment Set to £4 Complete (14)	80
5542	U	Wage Tax 1939 £4 Purple Employment Used (1)	60
5543	U	Wage Tax 1943/1940 9d brown Overprint Pair (2)	50

## NEW ZEALAND POSTAL HISTORY

### PRESTAMP ENTIRES/COVERS

5544	C	1855 (MY4) Envelope with light Red 'Paid At Petre' handstamp to New Plymouth with unframed New Plymouth MY 10 1855 at top left. Backstamped Petre unframed cds. The cover has ageing. Rated '2' in Red. Very Scarce (1)	500
5545	C	1856 (MY4) Powell Correspondence Entire from Wellington to Petre with good receiving MY 7 1855 cds. Rated '2' in black (1)	200

### SHIPMAIL COVERS

5546	C	1930 (AU8) 1d Red Metered Cover to USA with 'Salvaged from/SS Tahiti/Lost at sea' violet cachet. Bank Mail Cover (1)	250
------	---	--	-----

## NEW ZEALAND POSTAL STATIONERY

### POSTCARDS

5547	C	1901 1d Universal Printed Joseph Ward Printed Postcard Used (1)	200
5548	C	1913 1/2d Auckland Exhibition Postcard (Remuera and Auckland Harbour from One Tree Hill) in Black Fine Mint Scarce (1)	500

### ENVELOPES

5549	C	1901 Hancocks Lager Beer QV 1d Printed Envelope Samuel CW3a Used to London. Very Scarce (1)	750
------	---	---	-----



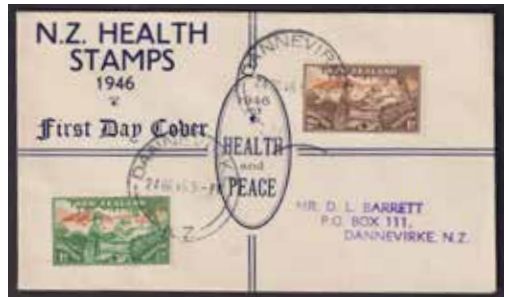
5459



5390



5389



5468



5348



5549

**SPECIAL OFFER - PURCHASE 3 OR MORE ITEMS FROM THIS LIST AND RECEIVE A 10% DISCOUNT**

The CP Newsletter is a confidential source of information for philatelists and collectors. Published by Campbell Paterson, Auckland New Zealand. ISSN 1172-0166

All lots offered in this newsletter are unconditionally guaranteed as genuine and as described. They are offered subject unsold and will be sent on approval to known clients. Postage is additional. GST not included (NZ only).

The information contained in this newsletter is private to subscribers and unauthorised reproduction is expressly forbidden.

Postal orders to **PO Box 99988, Newmarket, Auckland 1149, New Zealand.**

To obtain more detailed descriptions of the material offered in this newsletter or to place orders, phone us **0800 788 778** or Fax **64-9-522 0313** or Email: [service@campbellpaterson.co.nz](mailto:service@campbellpaterson.co.nz)

Our website is: [www.campbellpaterson.co.nz](http://www.campbellpaterson.co.nz)

