

CAMPBELL



PATERSON

NEWSLETTER

FOR COLLECTORS OF NEW ZEALAND STAMPS

VOLUME 69 NUMBER 9 APRIL 2018



196(m)



196(n)



196(d)



201(j)



196(h)

CP'S NEW ZEALAND STAMPS - WELCOME TO OUR TRADITION

CAMPBELL PATERSON PO Box 99988, Newmarket, Auckland 1149, New Zealand

1 Ngairi Avenue, Newmarket, Auckland 1051, New Zealand

T. 64-9-379 3086, F. 64-9-379 3087 service@campbellpaterson.co.nz

www.campbellpaterson.co.nz



New Zealand
Stamp Dealers
Association Inc.
www.nzstda.com



New Issue Notes

By Andrew Dolphin

Platinum Wedding Anniversary of Queen Elizabeth II and Prince Philip, Duke of Edinburgh (20 November 2017)

On 20 November 1947 the marriage took place of Princess Elizabeth and Philip Mountbatten, Duke of Edinburgh.

In 1972 HM The Queen and HRH Prince Philip celebrated their Royal Silver Wedding Anniversary. Great Britain and other countries issued commemorative stamps, but not New Zealand.

In 1987 The Queen and Prince Philip celebrated their Ruby Wedding Anniversary. Many countries released commemoratives, but not GB or NZ.

In 1997 The Queen and Prince Philip celebrated their Golden Wedding Anniversary. GB and NZ and many other countries issued stamps.

In 2007 The Queen and Prince Philip celebrated their Diamond Wedding Anniversary. As before GB and NZ and many other countries released commemoratives.

Now in 2017 Queen Elizabeth II and Prince Philip, Duke of Edinburgh are celebrating their Platinum Wedding Anniversary. This was an extremely significant event in the life of any marriage, and special sets of commemoratives have been issued by Great Britain and most other Commonwealth countries, including New Zealand.

Ours takes the form of six stamps printed using the usual four process colours with high-gloss litho varnish, and also silver foil, and this really stands out making for a bright and 'sparkly' set of six.

Designs:

\$1.00 - Engagement. The engagement is announced of Princess Elizabeth and Lt. Philip Mountbatten.

\$2.00 - Wedding. The wedding of Princess Elizabeth and Duke of Edinburgh.

\$2.20 – Family. Queen Elizabeth II, Prince Philip, Princess Anne, Princes Charles, Andrew and Edward, 1972.

\$2.30 – New Zealand – Queen Elizabeth II and Prince Philip in New Zealand, 30 January – 8 February 1974.

\$2.70 – Extended Family. Queen Elizabeth II, Prince Philip, Princes Charles, William, Harry and George, and Catherine, Duchess of Cambridge holding Princess Charlotte, Buckingham Palace balcony, 2016.

New Issue Notes (cont.)

\$3.30 – Seventy Years On. Queen Elizabeth II and Prince Philip watching the Trooping the Colour Ceremony from Buckingham Palace balcony, 2017.

Designed by Jonathan Gray, New Zealand Post, Wellington and printed by Southern Colour Print Ltd, Dunedin by offset lithography in the four process colours and silver foil with high-gloss litho varnish, perf 14½x14, six stamps in sheets of 25 and a six-stamp miniature sheet, on Tullis Russell 104gsm red-phosphor gummed stamp-paper.

S1738a-S1743a, SM1738/43

New Discoveries Follow Up

Following the announcement in the January 2018 CP Newsletter of the discovery of a new previously unrecorded 1935 Pictorials Officials inverted watermark – the 8d Tuatara Official L010e(w) – long time Second Pictorials specialist Mr John Geary of Dunedin, knowing that he had quite a quantity of unsorted 8d Tuatara stamps decided to check through them and, would you believe it, he found a second example! His stamp has been confirmed as the correct perf 14x14½, watermark sideways inverted W.8b – so that makes two of them now known.

You know, chances are there are more still out there! How many more can CP Newsletter readers report?!

Stamp Exhibition Dates

NZSDA Wellington Regional Stamp & Coin Show 2018

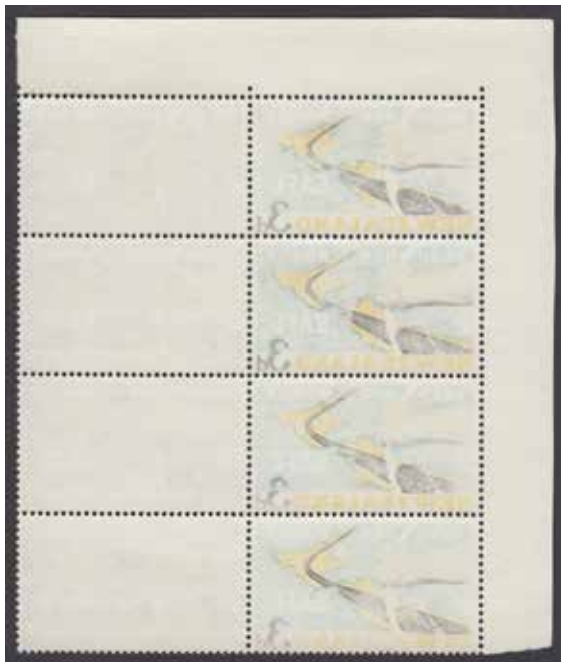
Chilton St James School, 124 Waterloo Road, Lower Hutt
Sat 26 May 10am-5pm; Sun 27 May 10am-4pm 2018

Dunedin 2018

The Armistice Stamp Show 2018, New Zealand National Show, presented by the Dunedin Philatelic Society, 9 – 11 November 2018, MoreFM Arena, Edgar Centre, Portsmouth Drive, Dunedin

Philatelic Exhibition New Zealand 2020, March 2020

The Events Centre, Ellerslie, Auckland



196(k)



196(a)



196(b)



201(k)



196(j)



196(e)



196(i)



196(g)



196(c)

APRIL OFFERS

Full Face Queens

- 196(a) A2t (SG138) 2d vermilion no wmk perf 12½, imperf right margin, 'SPECIMEN' diagonal overprint. Mint no gum.....M \$100
- (b) A5k(w) (SG135) 6d blue accidental imperf single, three margins, huge on right, cut into at top, good used.....U \$400

1898 Pictorials

- (c) E3a(z) 1d White Terrace double perfs vertically at right, fine used, scarce. (Cat. \$250).....U \$150
- (d) E4a(1) 1½d Boer War single in excellent original Khaki shade, with RPSNZ Expert Committee Certificate (1980). Mint no gum (Cat. UHM \$8500) Rare.....MNG \$1950

1d Dominion

- (e) J1a(z) De La Rue paper fine offset on back (Cat. \$150).....UHM \$100

1960 Pictorials

- (f) O3a(v) 2d Kaka-Beak lower right corner selvedge block of six, with new CP Cat. listing: offset on back in three colours: red, green and black FINE.....UHM \$3000
- (g) O10a(z) 8d Rata lower selvedge part imprint pair, with new CP Cat. listing, on one unit: offset on back in two colours: red and green.....UHM \$750

1967 Pictorials

- (h) OD4a(y) 2½c Kowhai missing deep blue background. A vertical strip of five, with centre stamp complete omission, a stunning spectacular Rare Error; stamps above and below major partial omission – a lovely transitional strip. This superb missing colour error is one of The Very Best in the 1960/1967 Pictorials.....UHM \$8750

1975 Roses

- (i) PA4a(w), (v) 4c "Super Star" Rose, lower right corner selvedge block of fifteen, with lower eleven stamps two colour offset on back: red and green, AND top four stamps three colour offset on back: red, green and purple. Both new CP Cat. listings – Fabulous block – Very Rare.....UHM \$5750

2009 Pictorials

- (j) PE45a 30c Tolaga Bay good perf error with vertical perfs now in centre of stamp, single.....UHM \$300

Commemoratives

- (k) S93a(x) 1964 Road Safety 3d top left corner selvedge block of eight, with four stamps light but complete (three colour) offset on back: new CP Cat. listing (block also includes (z) R3/2 'apostrophe' flaw).....UHM \$1000
- (l) S260/2(z) 1980 125th anniv First NZ Stamps 14c strip of three missing black – no 'New Zealand' or other wording (Cat. \$1000).....UHM \$700

APRIL OFFERS (cont.)

- 196(m) S479a(z) 1994 25th anniv Moon Landing \$1.50 single
Major Error: hologram and embossing omitted – Magnificent.
With copy of RPSNZ Expert Committee Certificate (2017)
(Cat. \$2500).....UHM \$2000
- (n) S918a(z) 2004 Olympic Games \$2.00 inverted laminate
– the famous error (Cat. \$4000).....UHM \$3750

Christmas

- (o) SC16a 1975 Christmas 3c top selvedge block of four small
but noticeable orange shift up – ‘CHRISTMAS 1975’ now into
‘New Zealand’.....UHM \$75

Health

- (p) TM37b(x) 1965 4d Fantail miniature sheet, with black colour
offset on back: country name, values, body of bird, etc, a new
CP Cat. listing.....UHM \$2750
- (q) TM38b(x) 1966 4d Weka miniature sheet, with offset on back
in three colours: black, brown and green: country name, values,
body of bird and fern-leaves behind. Fine and Rare.....UHM \$5000
- (r) TM45a(x) 1973 Prince Edward 3c miniature sheet, with green
colour offset on back. Previously known in the 4c red colour
offset on back, this is now joined by the similar 3c.....UHM \$1500

Booklets

- (s) W92a(y) 2003 \$7.50 Arrowtown booklet complete diecutting
missing: thus all stamps completely imperf Rare (Cat. \$2000).....UHM \$1500

Ross Dependency

- (t) RD47a 1997 40c Snow Petrel; left selvedge ‘traffic-light’ single
with prominent black colour doubled, easily seen (plus normal
for comparison).....UHM \$100

RE-ENTRIES & RETOUCHES – A Specialised Listing

1898 Pictorials

- 201(a) E2a 1d Lake Taupo: EV2k R5/4 a shift to right with
doubling showing in N of LAND and to right of D of LAND
(Cat. \$255).....UHM \$90
- (b) E2a 1d Lake Taupo: EV2j R3/6 doubling in EALAND, above
top frameline from E to corner, corner line extended, and
to right of D of LAND (Cat. \$190).....UHM \$100
- (c) E4a 1½d Boer War: EV4e R2/11 re-entry doubling &
EV4f R2/12 major re-entry: nearly whole design doubled
(Cat. UHM \$1040) block has patchy gum.....LHM \$250
- (d) E8a 2½d Lake Wakatipu: EV8k R7/4 re-entry line under
WAKA, used.....FU \$50

RE-ENTRIES & RETOUCHES – A Specialised Listing (cont.)

- 201(e) E9b 3d Huias: EV9b R1/10 right framelines re-entry
doubling (Cat. \$250)..... LHM \$150
..... single used U \$20
- (f) E9b 3d Huias: R10/2 re-entry doubling.....single used U \$20
- (g) E9b 3d Huias: R6/11 re-entry doubling.....single used U \$20
- (h) E11a 4d White Terrace: R1/12 re-entry over D of LAND,
in serial block sheet number 95 (Cat. \$560).....UHM \$250
- (i) E11a 4d White Terrace: EV11d R5/5 re-entry doubling
in pearls (Cat. \$660)..... UHM \$325
- (j) E13b 5d Otira Gorge: EV13g R7/12 ALAND re-entry
doubling. This pair with notable perf shift up, cutting
through FIVE PENCE (Cat. \$750)..... LHM \$475
- (k) E13b 5d Otira Gorge: R5/1 & R5/2 re-entry doubling.....LHM\$275
- (l) E16b 8d War Canoe: single with vertical guide-line on right.....LHM \$200
- (m) E17b 9d Pink Terrace: EV17c frame retouch to left of top left 9.....LHM \$250
.....single used U \$80
- (n) E18b 1/- Kea & Kaka: minor flaw on wing.....U \$40
- (o) E20b 2/- Milford Sound: R5/8 re-entry on U of SOUND.....MNG \$100
- (p) E20b 2/- Milford Sound: R7/10 re-entry lower right corner U \$100
- (q) E20b 2/- Milford Sound: R11/10 re-entry lower right corner..... U \$100

1d Universal

- (r) G09a Official Waterlow Plate W1 R8/5 re-entry..... LHM \$65

King George V

- (s) K5g(b) 4d deep purple: R3/8 major re-entry doubling, to right
"4", to crown and to right of crown, etc. (Cat. \$300).....LHM \$160
- (t) K5d(w) 4d violet: R1/6 re-entry top right '4d' (Cat. \$110) good used.....U \$50
- (u) K5d, K5e 4d violet: page study of minor retouches, four x singles,
+ strip of three marked R1/2(?), good used.....U \$30

1935 Pictorials

- (v) L1b(w) ½d Fantail: page study of R8/1 Clematis flaw, a Plate
1A plateblock of eight, and two singles, all used..... U \$60
- (w) L5e 2½d Mt Cook & Lilies: page study of R10/1 & R10/2
re-entries, outer frame doubling.....UHM \$40
- (x) L5d 2½d Mt Cook & Lilies: page study of the same block
with R10/1 & R10/2 re-entries more prominent.....UHM \$50
- (y) L7b(x) 4d Mitre Peak: R7/10, R8/10 MITRE retouches,
in inverted wmk (L7b(z)) block (Cat. \$200).....UHM \$125
- (z) L8f(t) 5d Swordfish: R6/10 flaw; R6/11, R6/12, R7/10
re-entries (Cat. \$300).....UHM \$150

RE-ENTRIES & RETOUCHES – A Specialised Listing (cont.)

- 202(a) L13b(z) 2/- Capt Cook: R1/4 COQK flaw (Cat. \$450)LHM \$200
 (b) L13c(y) 2/- Capt Cook: R1/4 COQK flaw, one short perf
 (Cat. \$225).....UHM \$75
 (c) L13f(x) 2/- Capt Cook: R1/4 COQK flaw (Cat. \$160).....LHM \$50
 (d) L14e(y) 3/- Mt Egmont: R3/6 sky and trees re-entry (Cat. \$130) FU \$90

King George VI

- (e) M8b 4d purple: R4/3 retouch..... UHM/LHM \$25
 (f) M13c 1/- red-brown and claret: R10/7, R11/7 retouchesUHM \$45
 (g) M14c 1/3d brown and light blue: two Plate 4-2 blocks,
 MFV14c(a) R13/5 retouch & MFV14c(b) R13/5 and R16/6
 retouches.....UHM \$90
 (h) M14a , M14c 1/3d brown and light blue: used study on card
 of seven retouches, R4/2, R8/4, R10/3, R12/10, R13/5,
 R13/8, R16/6.....U \$60
 (i) M15b 2/- brown-orange and deep green: MFV15b(d) R12/3
 green flaw, R13/1 two green flaws (Cat. \$200).....UHM \$150

1960 Pictorials

- (j) O18b 3/- Tongariro National Park: OV18b R1/16 sky retouch,
 in Value Block (Cat. \$115).....UHM \$75
 used single FU \$25
 (k) O20b 10/- Tasman Glacier: OV20b R16/4 retouch by skier
 (Cat. \$270).....UHM \$140
 (l) O20a, O20b 10/- Tasman Glacier: OV20a R9/1 “1” retouch x 2
 plus three other retouches, all used..... U \$90
 (m) O21a £1 Pohutu Geyser pink: R2/1 retouch below “1”, in Plate
 Block (Cat. \$500)..... UHM \$300
or in Imprint Block used U \$200
or in Imprint single used U \$50

1967 Pictorials

- (n) OD1a ½c Manuka: ODV1a R6/6 prominent side-frame retouch.....UHM \$15
 (o) OD1a ½c Manuka: R15/2 background retouch.....UHM \$20
 (p) OD4a 2½c Kowhai: ODV4e R8/5 butterfly flaw.....UHM \$20
 (q) OD4a 2½c Kowhai: ODV4f R14/9 apostrophe over “D”; ODV4n
 R12/7 two retouches; R16/8 retouch below 2½c.....UHM \$40
 (r) OD5a 3c Puarangi: ODV5d R11/5 ‘Z’ of ‘ZEAL’ flaw.....UHM \$20
 (s) OD5a 3c Puarangi: ODV5c R14/10 background weakness;
 R15/8 extra petal to flower.....UHM \$30

RE-ENTRIES & RETOUCHES – A Specialised Listing (cont.)

202(t)	OD6a 4c Daisy: ODV6a R8/8 “4” retouch.....	UHM \$20
(u)	OD7a 5c Clematis: ODV7c R6/1 lower left retouch.....	UHM \$25
(v)	OD9a 7c Rata: ODV9f R16/5 red cylinder damage.....	UHM \$20
(w)	OD10a 8c Flag: ODV10a R12/1 “Z” flaw.....	UHM \$20
(x)	OD11a 10c Timber: ODV11a R1/10 long retouch; R2/9 brown retouch.....	UHM \$20
(y)	OD14a 25c Butter Making: ODV14a R8/6 flaw between “G” and “A” (Cat. \$75).....	UHM/LHM \$45
(z)	OD27a 28c Fox Glacier: R10/5 small retouch (Cat. \$40)	UHM \$30
203(a)	OD15a 30c Tongariro National Park: R2/1 retouch under ‘N’ of ‘NEW’.....	UHM \$30
(b)	OD15b 30c Tongariro National Park no wmk: R2/1 retouch under ‘N’ of ‘NEW’ (Cat. \$160).....	UHM \$75
(c)	OD15a 30c Tongariro National Park: ODV15b R8/1 flagpole retouch (Cat. \$75).....	UHM \$40
(d)	OD15b 30c Tongariro National Park no wmk: ODV15b R8/1 flagpole retouch (Cat. \$160).....	UHM \$75
(e)	OD18e \$2.00 Pohutu Geyser magenta: ODV18a R6/4 lines in steam flaw (good!) (Cat. \$450).....	UHM \$200

1970 Pictorials

(f)	P9a 7c Leather Jacket: R8/11 flaw under fin; R10/12 flaw ‘N’ of ‘NEW’.....	UHM \$20
(g)	P11a 8c John Dory: PV11a R1/14 extensive retouch right of Zealand.....	UHM \$20
(h)	P11b 8c John Dory no wmk: block with green colour shift up, lower pair paper crease.....	UHM \$120
(i)	P15b 20c Maori Tattoo no wmk: good plate-scratch top selvedge, R2/5 flaw.....	UHM \$30
(j)	P16a 23c Egmont National Park: PV16a R6/3 flaw in sky.....	UHM \$30

1975 Roses and 1985 Birds

(k)	PA8a 8c ‘Josephine Bruce’: PAV8(a) R4/1 white flaw (Cat. \$50).....	UHM \$30
(l)	PC6a(z) \$2.00 Black Robin: R5/4, R5/5 grubs on branch flaws.....	UHM \$80
(m)	PC6a(z) \$2.00 Black Robin: R4/5 knot on branch under bird, semi-constant flaw.....	UHM \$50

POSTAL HISTORY

Full Face Queens

- 199(a) A2n (SG115) 2d blue posted Mount Ida, a light 037 CDS, to Port Chalmers; backstamps Mount Ida 30 June 1871, Dunedin 1 July 1871, Port Chalmers 3 July 1871. Neat cover.....\$400

First Sidefaces

- (b) C2c 2d deep rose Large Star watermark, 10 Aug 1875 small cover New Plymouth '9' in bars and CDS, to Wellington. Minor ageing and hinge remnants on front, ex-Dumas. Scarce item.....\$250
- (c) C2f 2d rose, 6 Jan 1881 Christchurch to Rangiora, backstamp 7 Jan 1881. Clean cover.....\$50
- (d) C2f 2d rose x six copies, ie 1/- rate, 9 Dec 1878, to Market Drayton, backstamp 22 Jan 1879. Christchurch duplex cancel heavy, and cover has been opened out, with some edge faults.....\$150
- (e) C2f 2d rose wing-margin right strip of three, 6d rate, 27 Aug 1877 obliterator A over 86 Pukekohe, to Somerset; backstamps Pukekohe 27 Aug 1877, Auckland 27 Aug 1877, Wells 9 Oct 1877.....\$375
- (f) C2f 2d rose, 8 Nov 1881 Clyde '023' in bars to Cromwell; backstamps Clyde 8 Nov 1881, Cromwell 10 Nov 1881.....\$200
- (g) C5a 6d blue, 13 Oct 1877 Havelock to Bishops Stortford; backstamps Havelock 13 Oct 1877, Picton 15 Oct 1877, Stanstead Essex 12 Dec 1877, Bishops Stortford 12 Dec 1877. Nice item but cover has been punched.....\$50
- (h) C5c 6d blue, 31 Jan 1880 Christchurch to Uxbridge, backstamp 13 March 1880. Cover has been repaired and has faults.....\$50

Second Sidefaces

- (i) D4e 2½d blue, 9 Sept 1894 Palmerston to Wiltshire; backstamps TPO-WN 10 Sept 1894, Chippenham 7 Nov 1894.....\$50
- (j) D4j 2½d blue, 9 March 1898 Auckland to Switzerland, via Vancouver; backstamps London 19 April 1898, Solothurn 20 April 1898.....\$100
- (l) D8a 6d brown, 24 June 1884 Auckland to London, backstamp 31 July 1884, neat clean cover.....\$75

1898 Pictorials

- (m) E1a ½d Mt Cook purple x four stamps: a pair and two singles, 27 July 1898 (note: CDS has inverted '27' in dateline), Ohau to Auckland; backstamps Hawera 27 July 1898, TPO-WN 27 July 1898, New Plymouth 28 July 1898, Auckland 30 July 1898. Interesting dateslug error and detailed routing.....\$100

POSTAL HISTORY (cont.)

199(n) E9c 3d Huias, G8a 1d Universal, 15 Sept 1904 Registered Oaonui to Australia, front has abbreviated Post Office 'Oao' for Oaonui Registered marking, via New Plymouth record no. 7741, via Auckland record no. 36347 plus red Auckland R in circle; backstamps New Plymouth 17 Sept 1904, Auckland 19 Sept 1904, Hobart 29 Sept 1904 (ex-Jury).....\$100

1d Universals

(o) G8a 1d Universal strip of four, 3 Sept 1904 Registered Arrowtown to Australia, backstamp Hobart 8 Sept 1904; front has manuscript 'Regd t arrow nr422' and second Arrowtown CDS 5 Sept 1904 (ex-Jury).....\$60

(p) G10a 1d Universal x four, strip of three & single, 21 June 1907 Registered Rahotu to Australia, front has manuscript 'R at Rhu no.44', via New Plymouth record no. 4837, via Auckland record no. 31690; backstamps Auckland 23 June 1907, Hobart 1 July 1907 (ex-Jury).....\$60

King George V

(q) K2g 2d yellow perf 14line, K16a 1½d local, 28 Aug 1916 Registered Feilding to Dunedin; backstamps P.O. Main Trunk Wellington 28 Aug 1916, Dunedin 29 Aug 1916.....\$200

(r) K6a 4½d deep green, single usage on Dunedin Registered 11 Jan 1919, to Mexico; backstamps Honolulu Hawaii 6 July 1919, Laredo Texas 22 July 1919, Mexico 5 Aug 1919, plus two wax seals. Cover is worn and damaged top right corner.....\$125

(s) K8a 6d carmine, K9a 7½d deep red-brown, K11b 9d sage-green, K12a 1/- vermilion, 29 July 1921 on Iremonger Registered cover Chatham Islands to Bristol. Fine Registered cover.....\$300

(t) K3a 2½d deep blue pair, S9a ½d Victory, 5½d rate, 3 Oct 1921 Registered Wellesley Street to Austria; backstamps London 10 Nov 1921, Vienna 15 Nov 1921, neat cover.....\$100

(u) K10a 8d indigo-blue, rare single usage on Wellington OHMS Registered cover 7 April 1922, to Surrey, backstamp London 17 May 1922.....\$250

(v) K3a 2½d deep blue, K17b 1½d orange-brown, S9a ½d Victory, S10a 1d Victory, 5½d rate, 20 Nov 1928, Auckland Registered to Australia; backstamps Melbourne 28 Nov 1928, Brighton 29 Nov 1928.....\$75

(w) K7a 5d blue on KGV 1d envelope, 31 March 1931, Temuka Registered to Levin, backstamp 1 April 1931.....\$75

POSTAL HISTORY (cont.)

- 199(x) K19d 3d chocolate perf 14, T4a Health Hygeia, 7 Dec 1932 Registered Wellington East (Registration label Wellington East doubled), to England; backstamps 12 Jan 1933 Birmingham, 12 Jan 1933 Stourbridge..... \$100
- (y) K5g(2) 4d plate 44 blackish-violet, 12 June 1933, Registered Roslyn to USA, backstamp San Francisco 15 July 1933.....\$75
- (z) K12b 1/- vermilion, K15b 1d Field Marshal, 1/1d rate, 13 Nov 1933 Registered Dunedin to Germany; on reverse Germany 14 Dec 1933, Customs label and small wax seal.....\$150

1940 Centennial

- 200(a) S28a 1½d Centennial x two, 5 April 1940 Christchurch slogan cancel to St John Evangelist Society, Belgium; Opened and passed by Censor in New Zealand tape and 'Passed by Censor NZ 5' cachet. Front has two cachets: boxed 'NOT TRANSMISSIBLE.' and 'This Article Was Intercepted Overseas And Returned To New Zealand.'..... \$150

Express Delivery

- (b) U1c 6d Cowan Express perf 14x15, L2d 1d Kiwi, 23 Nov 1937 Palmerston North Delivery to Napier, with orange-red 'EXPRESS' label (Cat. \$400).....\$250

Health

- (c) T9a 1937 Hiker illustrated FDC, 1 Oct 1937 Wanganui local delivery, on scarce Jones H37.1NA(1)(b) 'First Day Cover New Zealand Health Stamp Issued October 1st 1937'..... \$100

Wreck Mail

- (d) 19 Aug 1946 window envelope from Wellington, stamp washed off, violet cachet front and reverse: 'Damaged Through Immersion In Manawatu River Railway Accident.'..... \$300

Meter Marks

- (e) 1 Feb 1905 Wales 2nd Die 'One Penny' franking machine, cancelled red Dunedin Paid 1 Feb 1905, to Oamaru, received 2 Feb 1905, on Oilette Tuck 'The Picturesque Thames': Pangbourne on Thames colour picture postcard. Very scarce meter mark..... \$900



196(r)



196(p)



196(q)



196(f)

1900 Postal Stationery Boer War postcards

A study of the New Zealand Inland and Australian 1d brown Postcards, with Boer War scenes at lower left. Cat. numbers are from Samuel Postal Stationery Catalogue

Bright yellow card

- 197(a) AA.10a(a) First Contingent Entraining at Capetown. Note: this card has no stop after "side", which is not mentioned in Samuel. Posted Stratford 11 Jan 1901, to USA, card has some mounting adhesions on reverse..... U \$100
- (b) AA.10a(e) In Camp, Newtown Park. Posted Napier 6 April 1900, to Waipawa received 9 April 1900..... U \$100
- (c) AA.10a(f) First Contingent Start For the Front. Unused..... M \$50
- (d) AA.10a(g) Capt Madocks, First Contingent. Unused..... M \$50
- (e) AA.10a(i) Major Robin, First Contingent. Posted Invercargill 12 March 1901, to Wellington received 14 March 1901 NZ flag machine cancel..... U \$100
- (f) AA.10a(l) Mounted Parade; Dismounted Parade. Posted Stratford 11 Jan 1901, to USA..... U \$100
- (g) AA.10a(n) Good-Bye, New Zealand! With exclamation mark. Unused..... M \$75
- (h) AA.10a(n) Good-Bye, New Zealand Without exclamation mark. Posted Stratford 11 Jan 1901, to USA..... U \$100
- (i) AA.10a(p) Presents For Our Boys. Posted Oamaru 17 Dec 1900, to Dunedin 18 Dec 1900, to Sydney 26 Dec 1900. To an Australian stamp dealer, his receiving cachet on reverse 29 Dec 1900..... U \$100

Creamish card

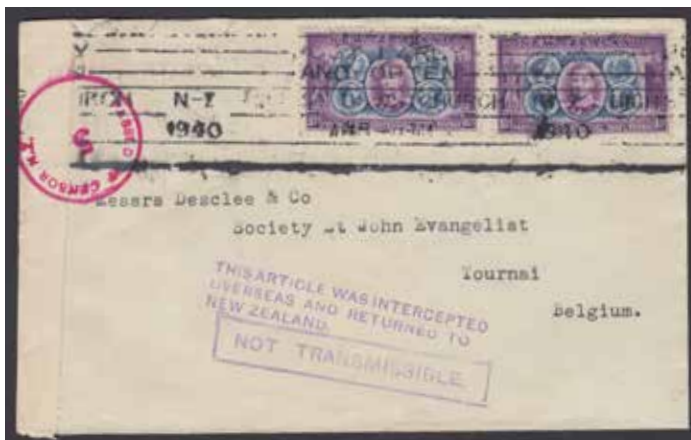
- (j) AA.10b(a) First Contingent Entraining at Capetown. Unused..... M \$50
- (k) AA.10b(b) A Refresher, Newtown Park. CTO unaddressed..... U \$50
- (l) AA.10b(c) Officers, Second Contingent. Unused..... M \$50
- (m) AA.10b(d) Breakfast in Camp, with added E3a 1d White Terrace. Posted Rotorua 28 June 1900, to Morrinsville 29 June 1900, to Thames 29 June 1900, has hinge remnants on front..... U \$60
- (n) AA.10b(d) Breakfast in Camp. Unused..... M \$50
- (o) AA.10b(e) In Camp, Newtown Park. Unused..... M \$50
- (p) AA.10b(g) Capt Madocks, First Contingent. Unused..... M \$50
- (q) AA.10b(h) Watering Horses, Newtown Park. Printed Presentation Social Invitation on reverse, 16 May 1901. Posted Ashburton 15 May 1901, to Ashburton..... U \$75
- (r) AA.10b(h) Watering Horses, Newtown Park. Unused..... M \$50
- (s) AA.10b(i) Major Robin, First Contingent. Unused..... M \$50
- (t) AA.10b(j) Capt Davies, First Contingent. Unused..... M \$50
- (u) AA.10b(k) The Camp, Second Contingent. Unused..... M \$50
- (v) AA.10b(n) Good-Bye, New Zealand. Unused..... M \$50
- (w) AA.10b(p) Presents For Our Boys. Unused..... M \$50

Other Postal Stationery Postcards

- 198(a) AW.1a 1892 ½d Austin Walsh postcard. Unused, has a minor tear at top.....M \$100
- (b) AW.1a ½d Austin Walsh postcard. Posted Dunedin 17 Oct 1892, some staining.....U \$125
- (c) AW.2a 1897 New Zealand Cyclists' Touring Club 1d blue on deep carmine pink. Unused, has slight back faults.....M \$250
- (d) AA.7a 1897 1d brown, with coloured views on reverse. Posted Christchurch 14 Nov 1899, to Wellington 15 Nov 1899 NZ flag machine cancel, to London, UK, via Suez; has two 'T 5c' circular postage due marks.....U \$60
- (e) AA.9a(b) 1d green Cathedral Peaks, Manapouri. Unused.....M \$50
- (f) AA.9a(d) " Customhouse Square, Dunedin. Unused.....M \$50
- (g) AA.9a(f) " Queens Wharf, Wellington. Unused, has white adhesion on back.....M \$50
- (h) AA.9a(h) " Wanganui River. Unused.....M \$50
- (i) AA.11a 1d brown. Posted Parua Bay 24 April 1902, to London, UK, has minor staining.....U \$30
- (j) AA.11b 1d brown, with no stop after "side" variety. Posted Matamata 29 Nov 1902, to Morrinsville, minor staining.....U \$30
- (k) AA.12a(a) 1d brown On the Taieri River. Unused, has faint tone.....M \$125
- (l) AA.12a(h) 1d brown Manchester Street, Christchurch, with no stop after "side" variety. Posted Invercargill 14 April 1903, to Gladstone, has light ageing and a corner crease.....U \$100
- (m) AM.1a 1901 Universal Penny Postage postcard. Sir Joseph Ward's printed postcard G1a(u), posted Wellington 1 Jan 1901 to 'Capt Alexander', has a vertical crease and fault at top (Cat. \$360).....U \$100
- (n) AM.1c 1901 Universal Penny Postage facsimile card with portrait of Sir Joseph Ward, has 1d Universal added, posted Timaru 21 March 1904, to Hinds 21 March 1904, has faults at top and is trimmed at leftU \$200
- (o) AB.4a(a)(j) 1d Auckland Exhibition, Albert Park, Auckland, showing guns which were in action at Waterloo. CTO Upper Symonds Street 28 Feb 1914 unaddressed, has a tear at top.....U \$300
- (p) AB.4a(a)(o) 1d Auckland Exhibition, Main Entrance to Auckland Exhibition. Unused, with clipped lower left corner and surface blemishes to face side (Cat. \$350).....M \$95
- (q) AB.4a(a)(s) 1d Auckland Exhibition, Sunlight and Shadow, Auckland Domain. Unused, has damaged top left corner and damage to face side (Cat. \$350).....M \$95
- (r) AD.1a set of three ½d Fantail 1935 Pictorials postcards: 7 Dec 1935 Palmerston North to Wellington; 1 April 1936 Wellington local delivery; 22 Jan 1937 Wellington local delivery.....U \$30



199(s)



200(a)



198(a)



198(b)

The CP Newsletter is a confidential source of information for philatelists and collectors. Published by Campbell Paterson, Auckland New Zealand. ISSN 1172-0166

All lots offered in this newsletter are unconditionally guaranteed as genuine and as described. They are offered subject unsold and will be sent on approval to known clients, Postage is additional. GST not included (NZ only).

The information contained in this newsletter is private to subscribers and unauthorised reproduction is expressly forbidden.

Postal orders to **PO Box 99988, Newmarket, Auckland 1149, New Zealand.**

To obtain more detailed descriptions of the material offered in this newsletter or to place orders, phone us **0800 755 557** or Fax **64-9-379 3087** or Email: service@campbellpaterson.co.nz

Our website is: www.campbellpaterson.co.nz Overseas clients phone (toll free) UK: **0500-893 975**

